

CUSTOMER FEEDBACK:

At MAN in Salzgitter we are using several pulse tools in very challenging applications where we make high demands on torque, durability and follow-up costs. The types of Cleco pulse tools which I am using in production are meeting these requirements perfectly, both in terms of repeatability, maintenance costs and quality. They work maintenance free until today since placing them into operation 15 months ago.

Dirk Schupmann
Planning Support
MAN Truck & Bus AG



H-SERIES SPECIFICATIONS



MODEL NUMBER	DRIVE TYPE	TORQUE RANGE	FREE SPEED	WEIGHT	SIDE TO CENTER	AIR CONSUMPTION			
		Nm	RPM			kg	mm	NPT	Hose I.D.
H-SERIES PISTOL GRIP SHUT-OFF MODELS									
7PTH352	1/4" Sq.Dr.	4-7	3500	0,79	21	1/4"	3/8"	0,1	0,25
7PTH350	1/4" QC	4-7	3500	0,79	21	1/4"	3/8"	0,1	0,25
11PTH352	1/4" Sq.Dr.	6-11	3500	0,82	21	1/4"	3/8"	0,15	0,3
11PTH350	1/4" QC	6-11	3500	0,85	21	1/4"	3/8"	0,15	0,3
11PTH353*	3/8" Sq.Dr.	6-11	3500	0,83	21	1/4"	3/8"	0,15	0,3
20PTH400	1/4" QC	10-20	4000	0,87	21	1/4"	3/8"	0,15	0,3
20PTH403*	3/8" Sq.Dr.	10-20	4000	0,86	21	1/4"	3/8"	0,15	0,3
35PTH400	1/4" QC	20-35	4000	1,05	24	1/4"	3/8"	0,2	0,4
35PTH403*	3/8" Sq.Dr.	20-35	4000	1,05	24	1/4"	3/8"	0,2	0,4
55PTH403*	3/8" Sq.Dr.	30-55	4000	1,15	24	1/4"	3/8"	0,3	0,6
80PTH350	7/16" QC	50-80	3500	1,45	28,5	1/4"	3/8"	0,3	0,6
80PTH354	1/2" Sq.Dr.	50-80	3500	1,40	28,5	1/4"	3/8"	0,3	0,6
110PTH300	7/16" QC	75-110	3000	1,70	28,5	1/4"	1/2"	0,4	0,8
120PTH304	1/2" Sq.Dr.	75-120	3000	1,70	28,5	1/4"	1/2"	0,4	0,8

PTHHA = Add "A" after "HH" in model number to denote Top Air Inlet option when ordering.
(* 7/16" Quick Change Chuck available separately as an accessory.)

General: Tool performance rated at 6 bar air pressure.
Standard Equipment: Suspension ball and torque adjusting wrench. Torque signal port (pistol grip models only).



MODEL NUMBER	DRIVE TYPE	TORQUE RANGE	FREE SPEED	WEIGHT	SIDE TO CENTER	AIR CONSUMPTION			
		Nm	RPM			kg	mm	NPT	Hose I.D.
H-SERIES PISTOL GRIP NON-SHUT-OFF MODELS									
7PHH602	1/4" Sq.Dr.	4-7	6000	0,77	21	1/4"	3/8"	0,3	0,25
7PHH600	1/4" QC	4-7	6000	0,79	21	1/4"	3/8"	0,3	0,25
11PHH653*	3/8" Sq.Dr.	6-11	6500	0,79	21	1/4"	3/8"	0,35	0,3
11PHH652	1/4" Sq.Dr.	6-11	6500	0,78	21	1/4"	3/8"	0,35	0,3
11PHH650	1/4" QC	6-11	6500	0,80	21	1/4"	3/8"	0,35	0,3
20PHH753*	3/8" Sq.Dr.	10-20	7500	0,84	21	1/4"	3/8"	0,4	0,3
20PHH750	1/4" QC	10-20	7500	0,86	21	1/4"	3/8"	0,4	0,3
35PHH653*	3/8" Sq.Dr.	20-35	6500	1,02	24	1/4"	3/8"	0,55	0,4
35PHH650	1/4" QC	20-35	6500	1,03	24	1/4"	3/8"	0,55	0,4
55PHH603*	3/8" Sq.Dr.	30-55	6000	1,12	24	1/4"	3/8"	0,75	0,6
80PHH604	1/2" Sq.Dr.	50-80	6000	1,40	28,5	1/4"	3/8"	0,7	0,6
80PHH600	7/16" QC	50-80	6000	1,41	28,5	1/4"	3/8"	0,7	0,6
110PHH550	7/16" QC	75-110	5500	1,66	28,5	1/4"	1/2"	0,9	0,8
120PHH554	1/2" Sq.Dr.	75-120	5500	1,65	28,5	1/4"	1/2"	0,9	0,8

PHHA = Add "A" after "HH" in model number to denote Top Air Inlet option when ordering.
(* 7/16" Quick Change Chuck available separately as an accessory.)

General: Tool performance rated at 6 bar air pressure.
Standard Equipment: Suspension ball



931041
Rubber Tool Stand



936695PT
Reserve Oil Filling Set



928483 Filler Unit

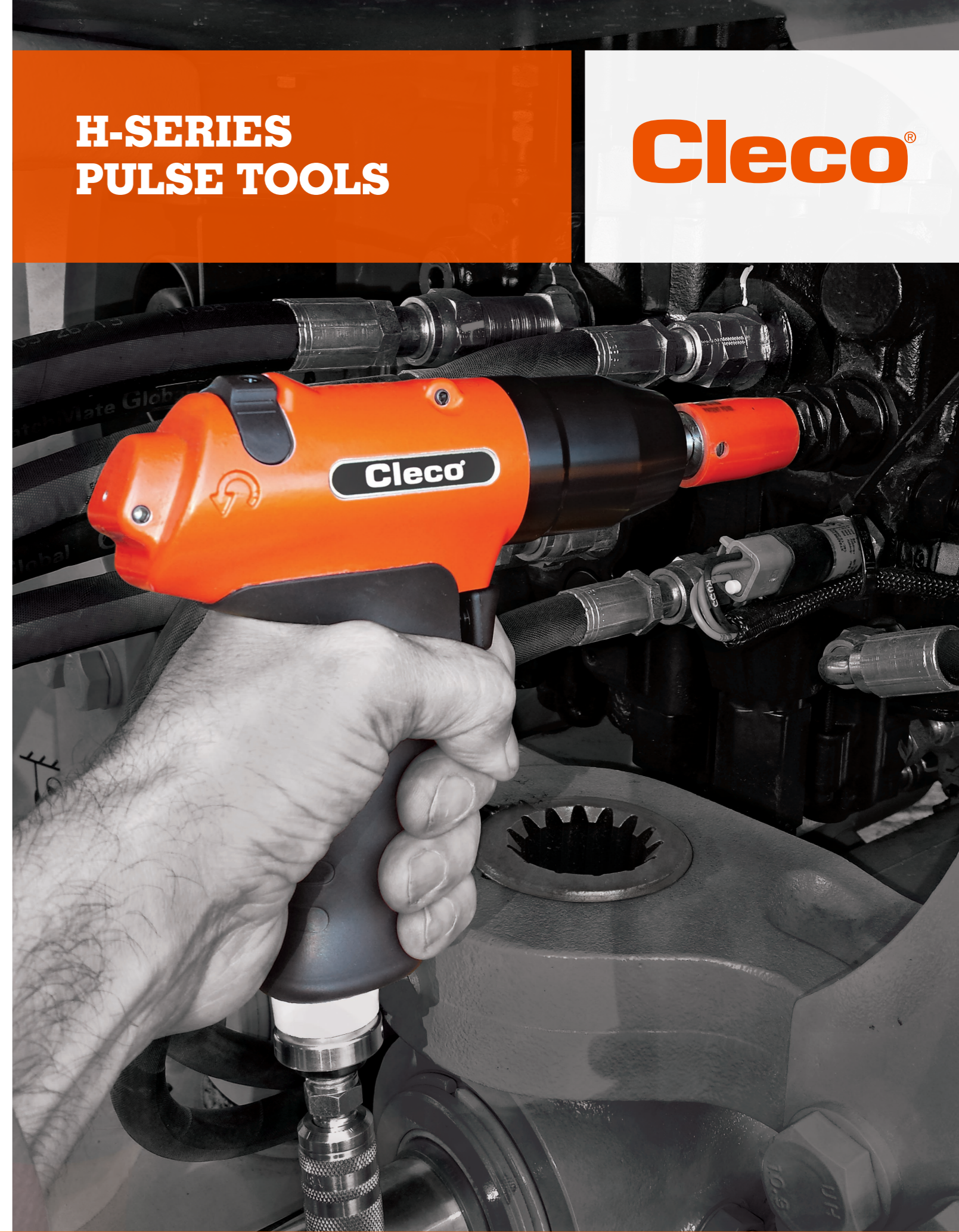
MODEL NUMBER	DESCRIPTION	MODEL NUMBER	PULSE REPAIR	MOTOR REPAIR
ACCESSORIES				
931041	H-Series 7PTH-120PTH (One Piece Rubber Tool Stand)	110/120 PHH../PTHH..	936035PT	
934918	Signal-Kit for torque verifier TVP110	7/11/20 PHH../PTHH..	936210	
935472	7/16" Quick-Change Chuck for 11/20/35/55PTHH/PTHHA/PHH/PHHA	35/55 PHH../PTHH..	936211	
935965	Vibration absorber for 35/55PTHHA/PHHA	80 PHH../PTHH..	936212	
935966	Vibration absorber for 80/110/120PTHHA/PHHA	7/11/20 PHH..		936158
928483	Filler Unit	35 PHH..		936168
935718	Connector (Angle)	55 PHH..		936169
936695PT	Reserve Oil Filling Set (Syringe and Distancer)	80 PHH..		936178
539317	Hydraulic Oil (One Quart)	110/120 PHH..		936179
TVP-110-30-D (230W)*	Torque verifier; 2,72kg; W x H x D 222 x 232 x 105mm	7 PTHH..		936251PT
		35 PTHH..		936252PT
		80 PTHH..		936253PT
		55 PTHH..		936281PT
		110/120 PTHH..		936282PT
		11 PTHH..		936283PT
		20 PTHH..		936284PT

* = Power cable, air signal-transducer, one 8m-cable for connection with air signal-transducer as well as one 2,3m-air hose for connection with transducer at the tool are included in delivery.
NOTICE: Tool has to be equipped with a Signal-Kit for TVP-110.

MODEL NUMBER	DESCRIPTION SHUT-OFF	MODEL NUMBER	DESCRIPTION NON-SHUT-OFF
PROTECTIVE COVERS			
937442PT	7/11/20PTHHA/7/11/20PHHA	937447PT	7/11/20PTHH/7/11/20PHH
937443PT	35PTHHA/35PHHA	937448PT	35PTHH/35PHH
937444PT	55PTHHA/55PHHA	937449PT	55PTHH/55PHH
937445PT	80PTHHA/80PHHA	937450PT	80PTHH/80PHH
937446PT	110/120PTHHA/110/120PHHA	937451PT	110/120PTHH/110/120PHH



Protective Cover



H-SERIES PULSE TOOLS



WE REFINE PULSE TOOLS.

Cleco®

H-SERIES PULSE TOOLS

DURABLE.
ECONOMICAL.
LOW MAINTENANCE.

We are constantly improving our products to guarantee you optimum productivity.

The Cleco H-Series combines legendary durability with unmatched repeatability so you will be able to complete every joint quickly and reliably.

Due to the excellent power-weight ratio, **you will not want to put it down again.**



UNBEATABLE PERFORMANCE.

With 54 models of shut-off and non-shut-off pulse tools to choose from, you are sure to find just the right Cleco Pulse Tool for the job.

Outstanding Ergonomics
Leading motor design combined with new body development provides exceptional biotechnology. Less vibrations allow for greater operator comfort.

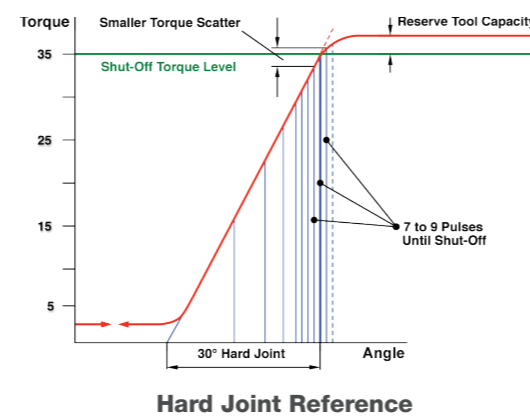
Powerful and Efficient 3-Chamber Air Motor
With speed governor and oilless blades. Reduces tightening time with increased torque. Unique design reduces blade wear and lowers total cost of ownership.

50% Lower Air Consumption @ Free-Speed
Innovative centrifugal speed control does not release the entire capacity before run down has ended. Enables operation to as low as 4 bar. Lower air consumption drives lower cost of ownership.

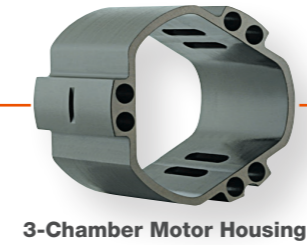
Easy Torque Set-Up
Simply insert hex into rear port of tool.



High-Precision Shut-Off
Mechanism ranges close to electric tool characteristics at a tolerance of +/- 10% at Six Sigma.

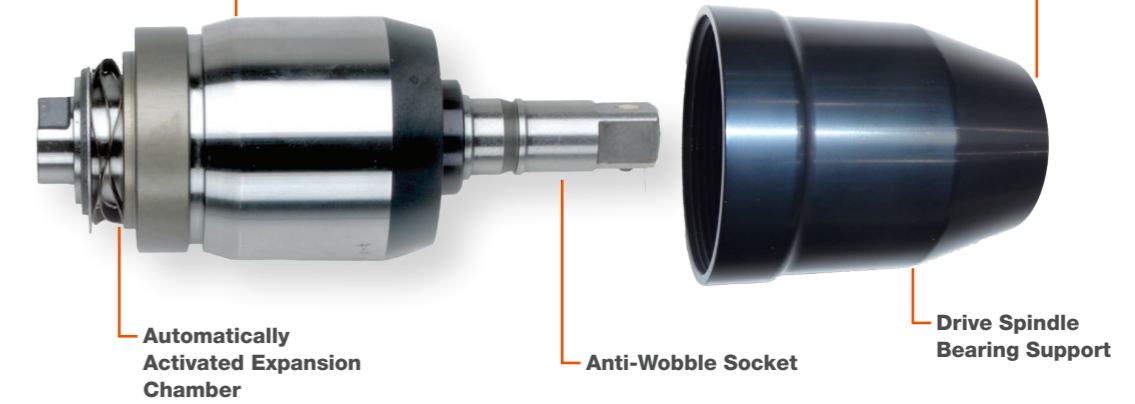


Easily Adjustable Motor Speed
Ensures accuracy on hard joints. Can be locked into place to prevent accidental modification.



NEW Reduced Tool Maintenance
Double-chambered pulse unit with built-in automatic oil reserve. Up to 500,000 cycles before the first service.

Completely Re-Engineered Pulse Unit
Delivers market-leading repeatability for hard and soft joints.



Ships Ready for Error-Proofing
Works with existing TVP torque verifier. Port located near air inlet to maximize ergonomics.

